

Innovation from the leader in  
minimally-invasive cosmetic dentistry.



Introducing a  
breakthrough veneer  
placement system

LUMINEERS®

in LUMITray™ technology

smiles made easy.

# A beautiful, permanently white smile made easy.

## Minimize chair time, maximize results

LUMINEERS® in LUMITray™ makes it possible to give your patients healthy, beautiful, and permanently white smiles in only 2 visits. With full-arch placement, the actual seating process takes only 1 hour.

## First visit

The following patient records are required:

- Upper and lower impressions
- Photographs
- Bite registration






## Between visits

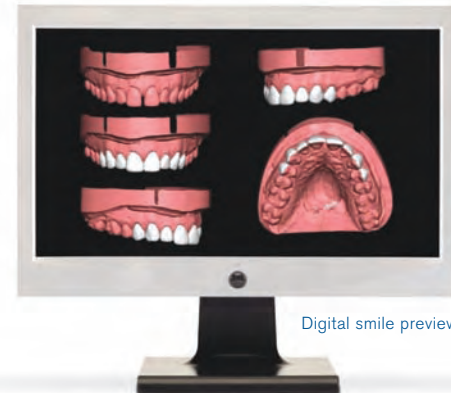
- Digital smile preview helps ensure that the second visit is a success

## Second visit

In just 1 hour, deliver up to 10 veneers

Take advantage of a short,  
1-hour seating process.

A spectrum of cosmetic concerns can be treated	
Permanent whitening	
Chipped	
Alignment	
Shape and size	
Diastema	



Digital smile preview

# New tray technology

elevates the standard of  
care in cosmetic dentistry

## Simple, minimally-invasive treatment plan

Now you can transform your practice while you transform your patients' lives with beautiful smiles.

- It has never been easier to plan, prepare, and place veneers
- Unlike traditional veneers, this innovative treatment plan does not require 6-8 hours of chair time

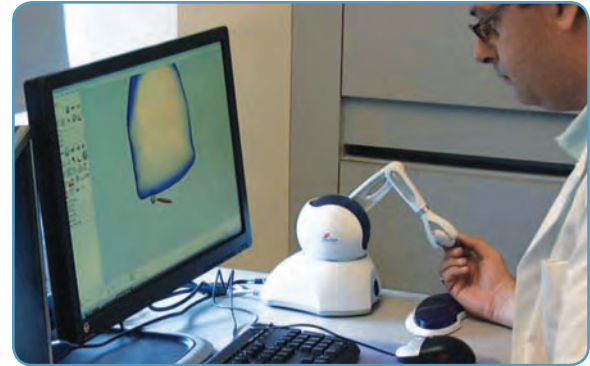
## Novel digital veneer design system

- Patented CAD/CAP technology digitally scans and interprets patients' veneer measurements
- Technicians interactively build the veneers with micron-accurate precision
- A special haptic device allows force feedback, giving technicians full 3-D manipulation and sense

## Unique, full-arch LUMITray delivery system

- Revolutionary and simple, LUMITray provides smooth, all-in-one placement (or seating)
- Delivery system also includes reshaping trays and optional protection tray for maintenance

Now you can offer a beautiful, permanently white smile to all of your patients.



3-D modeling software



LUMITray technology offers a precise, full-arch seating arrangement that saves you time and money.

LUMINEERS®

in LUMITray™ technology

LUMINEERS in LUMITray Technology  
may change the face of your practice.

**Call your account representative now  
for more information 1-800-445-0345.**



The LUMITray system with digital preview  
has **Remedent**® technology built in.

©2009 Den-Mat® Holdings, LLC. World Rights Reserved. 821254400 06/09CO

LUMINEERS®

in LUMITray™ technology

smiles made easy.