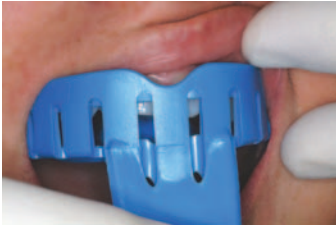
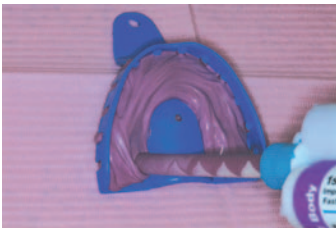


HOW TO MAKE A SUCCESSFUL IMPRESSION

CUSTOMIZE IMPRESSION TRAY:



1. Check stock tray on patient for proper fit.



2. Using heavy or monophasic PVS impression material, fill tray from back to front (keeping nozzle submerged in impression material as you load the tray).



3. Cover material with thin plastic wrap.



4. Insert tray and carefully seat. After impression material sets, remove from mouth. Be sure that no distinct tooth impressions have been made. If so, cut out that area of impression material.

FINAL IMPRESSION:



1. Remove plastic wrap from customized impression tray.



2. Using light bodied impression material, fill tray covering all tooth areas and entire palate.

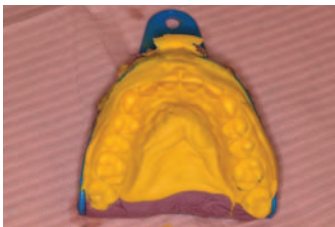
HOW TO MAKE A SUCCESSFUL IMPRESSION—PAGE 2



3. Using disposable impression syringe, cover teeth with impression material. Start on buccal, then lingual or palatal, then occlusal surfaces.



4. Seat tray and wait for material to set.



5. Remove tray from mouth and check impression.

WE RECOMMEND:



1st Impression PVS



1st Impression Alginate

Get accurate impressions easily the first time. The super hydrophilic, polyvinylsiloxane impression material produces high quality impressions that will not distort. Patients of all ages will appreciate the pleasant Berry-Berry Flavor. Available in Light Body, Monophase, and Heavy Body in Regular (4:30 set time) and Fast Set (2:15 set time).

Features:

- Excellent dimensional stability
- Fast working time
- Berry-Berry scent
- High performance delivery system

Benefits:

- Less chance for distortion
- Less waiting for patients and staff.
- Greater patient acceptance
- Fast and easy to extrude the material

The easy-to-mix, heavy-bodied alginate produces highly-detailed impressions that withdraws easily from undercuts and has high tear strength with excellent elasticity. Available in Cherry, Mint, and Unflavored in Regular and Fast Set.

Features:

- Exceptional elasticity
- Fast working time
- Berry-Berry scent
- Fine particle size

Benefits:

- Withdraws easily from undercuts
- Less waiting for patients and staff
- Greater patient acceptance
- Fast and easy to mix

CALL 1-800-445-0345 to speak to a Technical Representative if you have additional questions.